

SUPERCLOSET®

LED
DELUXE
SMART GROW CABINET



INSTRUCTION MANUAL



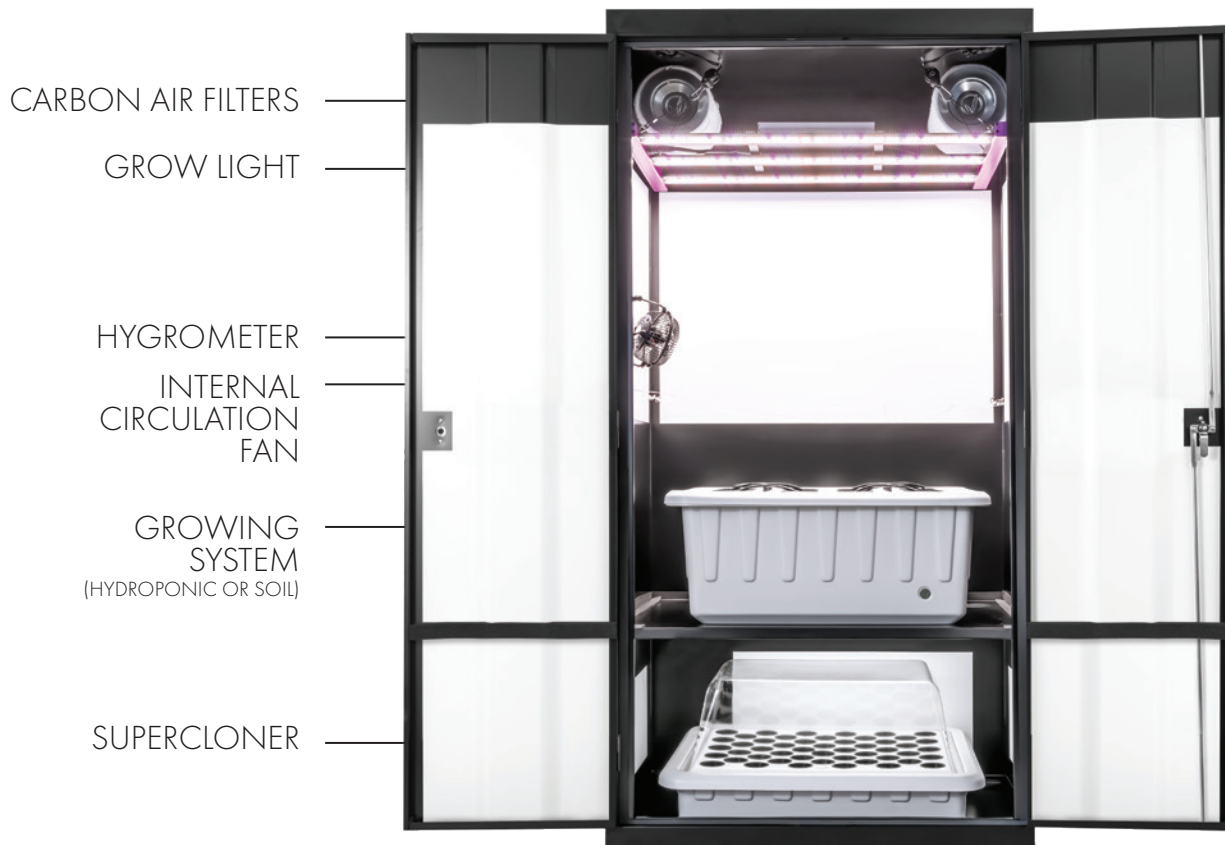


WELCOME TO THE FAMILY

**Congratulations, and thank you for choosing SuperCloset.
You now have the world's best grow cabinet.**

These instructions will guide you through the process of setting up your **Deluxe**. Please read through the **entire** instruction manual before you begin, including any and all instructions that come with the individual components.

Lets take a look at the layout and components of your SuperCloset.



COMPONENTS



CARBON AIR FILTER

X2



KIND LED LIGHT



POWER STRIP



AIR PUMP

X2



WATER PUMP



INTERNAL CIRCULATION FAN



SUPERPONICS 16

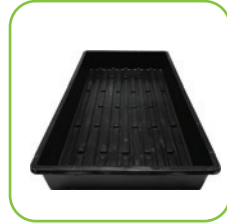
OR



SOIL POTS

X6

X8



SOIL POT TRAYS



1/4" AIR TUBE HOSE

X6



AIR STONES

X2

X4



3" & 2" NET CUPS



LOTUS NUTRIENTS SAMPLES



PH TESTING KIT



SMART PLUG

X2



GFCI



THERMOMETER/
HYGROMETER



TDS METER



NET TRELLIS, HOOKS, TIES



T5 LIGHT

X2



CLAY ROCKS



1" GROW PLUGS



SUPERCLONER 50



3" ELBOWS
2" ELBOWS

X2



Let's start with unpacking the SuperCloset...

- 1** Carefully unbox your SuperCloset and remove all contents from inside the cabinet.
- 2** Unpack the contents of the cabinet, as well as any components packaged inside the cabinet reservoir.
- 3** Reference your Quality Assurance Checklist and verify that you have all of the needed components for your system.



Prior to setup, make sure you have all of the necessary components by cross referencing with the QAC (Quality Assurance Checklist). Take this time to familiarize yourself with each of the components.



We are now ready to set up the SuperCloset

1. Make sure the cabinet is in its final location, as it will be more difficult to move when fully assembled. Do not plug in any of the components just yet. Let's get everything in place first.

SUPER GROW TIP:

Use masking tape and a marker to label each component's power cord at the plug to help identify the components later in the assembly.

2. The cabinet comes with 4 Black Plastic Elbows (image a). Two 3" Elbows with foam tape and two 2" Elbows with Foam Tape. One 2" Elbow will have an extension.
 - a. Insert the foam side of the two 3" Elbows into large holes located in rear of the cabinet.
 - b. Insert the foam side of one 2" Elbow into the hole located near the top in rear of the cabinet.
 - c. Detach the Coupling from the remaining 2" Elbow. Insert this Elbow into the topside of the hole located in the interior shelf of your cabinet. Reattach the Coupling to the Elbow from the underside of this shelf (image b).
3. The exterior Elbows will allow you to run the cords out of the cabinet with minimal light leaks and allow for fresh air flow into the cabinet. The interior Elbow will facilitate airflow between the Cloning Chamber and the Veggie/Flower Chamber (image b).
4. Locate the Power Strip (image c). Locate the two screws on the center rear of the cabinet. The power strip has holes on it that fit on these screws for mounting (image d).

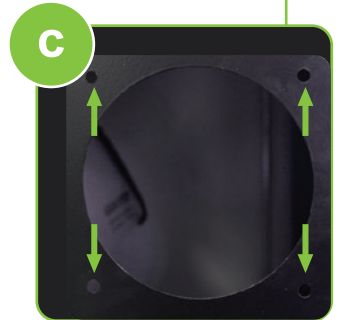


Installing your Custom Carbon Filters

1. Locate and unpack the Custom Carbon Filters (image a).
2. Remove the four wing nuts on the back side of the fan (image b), then remove the fan grill from the fan.
3. Locate the two large openings near the top of the back of the cabinet with the four small surrounding holes (image C). With the help of a partner hold the Carbon Filter and fan flush to the **INSIDE** back of the cabinet. Make sure to place the four bolts through the four provided holes.

NOTE: THE CARBON FILTER POWER CORD REMAINS INSIDE THE CABINET, NOT THROUGH THE FAN HOLE OPENING.

4. Have a partner place the fan grill on the outside of the cabinet on the four filter fan bolts. Place a washer on each bolt, then secure with wing nuts (image d). Repeat steps 1-4 for the second Carbon Filter/Fan.
5. Run the power cords for the Carbon Filter Fans through the nearest Elbow to the back of the cabinet.

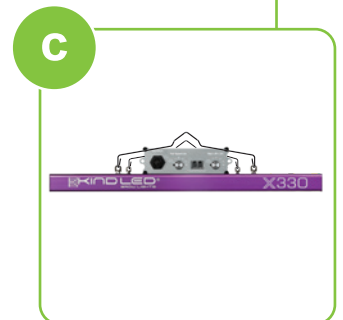
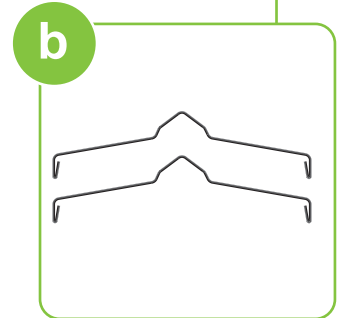


Hanging your LED Light

1. Unpack KIND LED Grow Light (image a).
2. Locate your the Wire Hangers (image b).
3. Connect the wire hangers to each of the metal hangers on the light (image c).

We have set the light on a convenient Yo-Yo system so the height can be adjusted as your plants grow. To lower the light, simply press the button located on the side of the Yo-Yo and adjust to the desired height. To raise the light pull upward on the end of the Yo-Yo cord.

4. Place the Kind LED Light in the bottom of the cabinet. Lower the Yo-Yo system until you can connect the Yo-Yo carabiners to the center of the Wire Hangers (image d). Raise the light to the desired height.
5. Run the power cord from the LED light through the nearest Elbow opening to the back of the cabinet.



Setting up the SuperCloset

1. Locate the Internal Circulation Fan (image a). Note the “S” hook connected to the base of the Fan. This hook will fit into the notches located on the backside of the inner door frame (image b). Mount the Fan on one of the lower notches. As your plants grow taller, move the Fan to the upper notches. Ideally the Fan will blow air across the top of the plants. Thread cord through the nearest Elbow opening.
2. Locate the Thermometer/Hygrometer (image f). Remove the battery cover and remove the plastic safety blocker from the battery terminal. Use the included Velcro Strips to affix your Thermometer/Hygrometer to the inside of your cabinet. The best placement for this is towards the top of the cabinet, either on the side or back wall.
2. Run the external probe to the outside of the cabinet, through the nearest Elbow. Make sure the probe is not touching any surface on the out side of the cabinet as this will provide false readings.



SuperCloner 50 Assembly

1. Locate the SuperCloner 50 (image a). Remove lid, and set aside. Remove all contents, including the Air Pump, blue 12" Air Stones, and fifty Net Cups.
2. Unwrap the Air Stones and lay them down inside of the SuperCloner (image b).
3. Locate the Air Pump (image c) and place it next to the SuperCloner.

NOTE: THIS PUMP SHOULD NEVER BE PLACED IN WATER!

4. Locate and attach the two black tubes (image d) to the metal nodes on the front of the Air Pump. Run the other end of the black tubing through the channels located on the rim of the reservoir (image e).
5. Connect the other end of the black tubing to the Air Stones. Once these are connected, ensure the Air Stones remain flat on the floor of the reservoir.
6. Turn the black dial on top of your Air Pump clockwise until it stops. Replace the lid of the SuperCloner and insert the 2" net cups.
7. Position the SuperCloner 50 in the Cloning Chamber along with the Air Pump. Run the Air Pump Power Cord out of the cabinet through the same Elbow as the T5 Light Strip Power Cord. Do not plug in the Air Pump yet.

a



b



c



d



e



SuperPonics 16 System Assembly

1. Remove the lid from the SuperPonic 16 system and set it aside for now. Notice the channels located on the rim of the reservoir (image a). These channels will be for the placement of the Air Pump Tubing and Water Pump power cord.

AIR PUMP AND AIR STONES

2. Locate the four gray Air Stones included in the shipment (image b). Place the Air Stones at the bottom of the SuperPonics reservoir. *Note: The Air Stones have a male end that will fit in the black Air Pump tubing.*
3. Locate the black Air Pump tubing for the Air Stones connect the tubing to the end of each airstone. Arrange the tubing into the channels located on rim of the reservoir (image c).
4. Locate the Air Pump included in your shipment (image d).

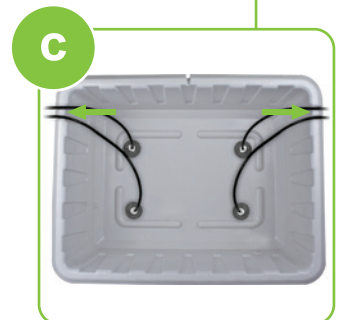
NOTE:

THIS PUMP SHOULD NEVER BE PLACED IN WATER

5. Connect the open end of the Air Pump tubing to the metallic outputs located on the Air Pump (image e).

SUPER GROW TIP:

Your plant roots need and love oxygen! It is extremely important to the health of the plants that you keep your Air Pump and Air Stones running at all times when the system is in use.



SuperPonic 16 System Assembly

6. Locate the Water Pump (image a) and attach the supplied 1/2" fitting to the top of the water pump. Place the Water Pump in the SuperPonics reservoir near end with the channel. Arrange the power cord of the Water Pump into the middle channel located on the rim of the reservoir (image b).

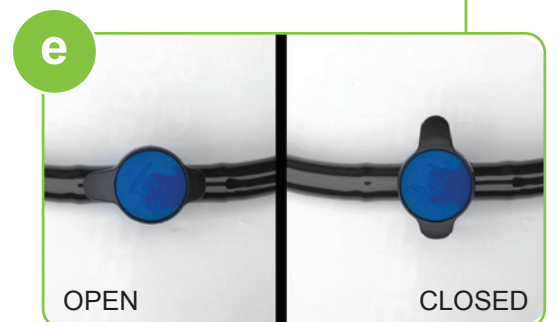
NOTE: *Read the instructions for the water pump, as they contain valuable information on how to maintain this component. THIS PUMP SHOULD NEVER RUN WHEN NOT FULLY SUBMERGED IN WATER.*

7. Locate the reservoir lid. On the under side of the lid, locate the open end of the black tubing (image c). Attach the open end of the tubing to the open connector on the top of the Water Pump (image d). Return the lid to the reservoir.

NOTE: *The SuperPonics 16 includes an automatic drainage tube to empty the reservoir. This tube stays in the reservoir until you need to drain. To drain the reservoir place the open end of the tube in a receptacle and open the valve by turning it parallel to the drainage tube (image e). Finally turn on the water pump on to drain the reservoir.*

The valve should ALWAYS be in the closed position unless draining the reservoir.

8. Insert the Net Cups into the openings of the top of the reservoir. Once in place, arrange the top feed hoses to the center of the net cups
9. Place the SuperPonics system and Air Pump inside the flower chamber of the cabinet. Run the Water Pump and Air Pump power cords through the lower opening in the back of the cabinet.



Final Assembly

1. Locate the power strip (image a), the GFCI Protector (image b), and the two Smart Plugs (image c).

DO NOT PLUG IN THE POWER STRIP YET.

2. Plug in the following from left to right

TOP ROW

- 1) Smart Plug #1
Once the Smart Plug is plugged in, plug in the Kind LED Grow Light
- 2) Internal Circulation Fan
- 3) T5 Clone Chamber
- 4) Smart Plug #2
Once this Smart Plug is plugged in, the Water Pump can now be plugged in.

BOTTOM ROW

- 5) Air Pump #1
- 6) Air Pump #2
- 7) Carbon Filter Fan #1
- 8) Carbon Filter Fan #2

a



b

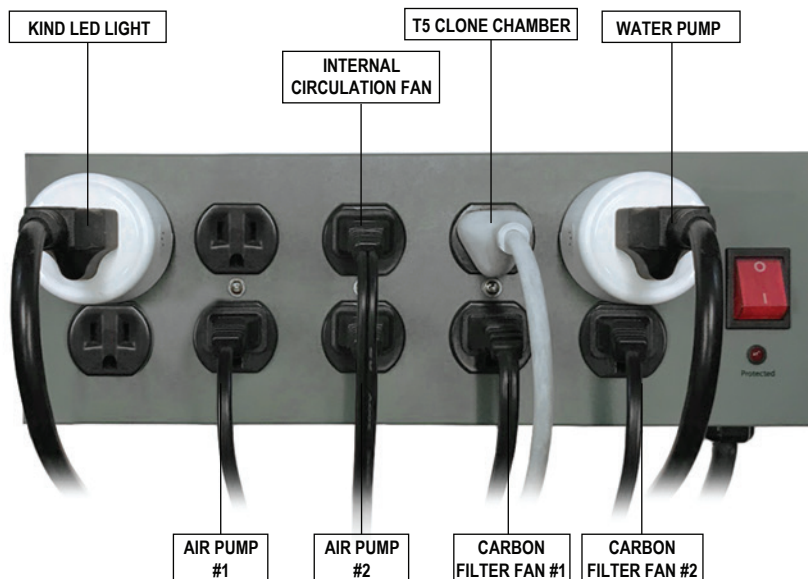


c



X2

Properly configured Power Strip Should look like this



If you have any questions during the setup process, please call a SuperCloset representative at 1.877.476.9787



Almost Done

3. At this time, add water to the reservoirs. When filled to the appropriate levels, the SuperCloner 50 reservoir will hold about 7 gallons of water. The SuperPonic 16 reservoir will hold about 15-17 gallons.

SUPER GROW TIP:

Your reservoir should always be filled at least halfway. In the beginning stages, we recommend maintaining a water level extremely close ($\frac{1}{2}$ " - 1") from the bottom of the net cups, but not touching (image a). The water should remain at this level until an evident root structure begins to develop.

*Water pump schedule suggestions.
Run for 3 minutes approximately every 4 hours.*

12:00 - 12:03

4:00 - 4:03

8:00 - 8:03

12:00 - 12:03

4:00 - 4:03

8:00 - 8:03

a



b



4. Plug the GFCI Protector (image b) into any 110v wall socket. With the power strip turned OFF, plug the power strip into the GFCI Protector.

NOTE: DO NOT POWER UP YOUR CABINET YET!

5. Now that everything is plugged into the power strip, let's verify some important steps:

- 1) LED Light is properly hung.
- 2) Watering System tubes are securely fastened to the top of the Water Pump.
- 3) Both Reservoirs are filled with water and Water Pump is fully submerged.
- 4) Air Pumps are next to (NOT IN!) the reservoir.
- 5) Light Power Cord is plugged into Smart Plug#1.
- 6) Water Pump Power Cord is plugged into Smart Plug #2.
- 7) Power Strip is off and plugged into the GFCI Protector.

6. After verifying all of the above, it's time to turn on your SuperCloset. Turn the power strip switch to the ON position, and the system should spring to life before your very eyes!

