

SUPERCLOSET

# Dryer Tent Kit



INSTRUCTION MANUAL





## WELCOME TO THE FAMILY

**Congratulations, and thank you for choosing SuperCloset.  
You now have the world's best Drying System.**

These instructions will guide you through the process of setting up your **Dryer Tent Kit**. Please read through the **entire** instruction manual before you begin, including any and all instructions that come with the individual components.

Lets take a look at the layout and components of your SuperRoom.



# COMPONENTS



Gorilla Grow Tent



GGT Drying Rack

x3 for 2x4  
x6 for 4x4



Phresh Carbon Filter



Hurricane Inline Fan



Clip-On Active Air Fan



ThermoFlo Ducting

25 ft



Aluminum Tape



Speedster Fan Controller



Wire Hangers

x15 for 2x4  
x30 for 4x4



Trim Tray



Boveda Humidity Packs

x6



Precision Pruners



Blade Lubricant

x6



Thermometer/Hydrometer



6-Site Power Strip



GFCI Shock Protector



Ducting Hose Clamps



## Let's start with unpacking the Dryer Tent Kit...

- 1
 Unpack the contents of the the boxes. To avoid misplacing components, place them in an open area.
  
- 2
 Reference your Quality Assurance Checklist and verify that you have all of the needed components for your system.

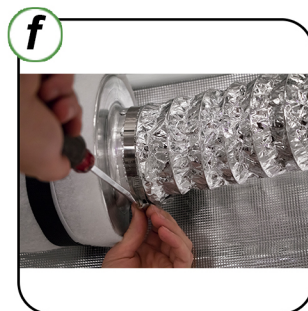


Prior to setup, make sure you have all of the necessary components by cross referencing with the QAC (Quality Assurance Checklist). Take this time to familiarize yourself with each of the components.



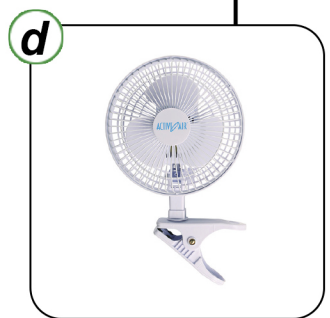
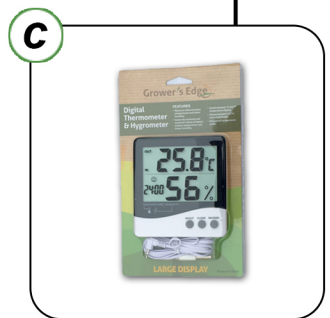
## We are now ready to set up the Dryer Tent Kit

1. Assemble your Gorilla Grow Tent according to the manufacturers setup instructions. Your Gorilla Grow Tent comes with an included 1 Foot Extension Kit. The tent, with this extension kit installed, will be a total height of 7 ft, 11 in tall. This height will fit under a standard 8 ft ceiling, but determine ahead of time if you have adequate room for the extension kit. \*Installing the included spill tray is optional for the Dryer Tent Kit.
2. Move the assembled Gorilla Grow Tent into its final location before continuing setup. Once the remainder of the components are installed, it will be harder to move.
3. Locate the Phresh Carbon Filter (image a). Using the black straps included with the Gorilla Grow Tent (image b), attach the filter to the ceiling support on the back wall of the cabinet as shown (image c & d)
4. Locate the ThermoFlo Ducting (image e). Attach one end of the ducting to the Phresh Carbon Filter using the provided hose clamps. Tighten hose clamp for a snug fit (image f).
5. Feed the other end of the ducting to the nearest ducting port. Gorilla Grow Tents are designed with convenient exhaust ports located in the roof of the tent (image g). Once the ducting is fed through the port, use the double-cinching pulls to tighten the ducting port around the ducting to ensure a snug fit to prevent light from entering the tent.



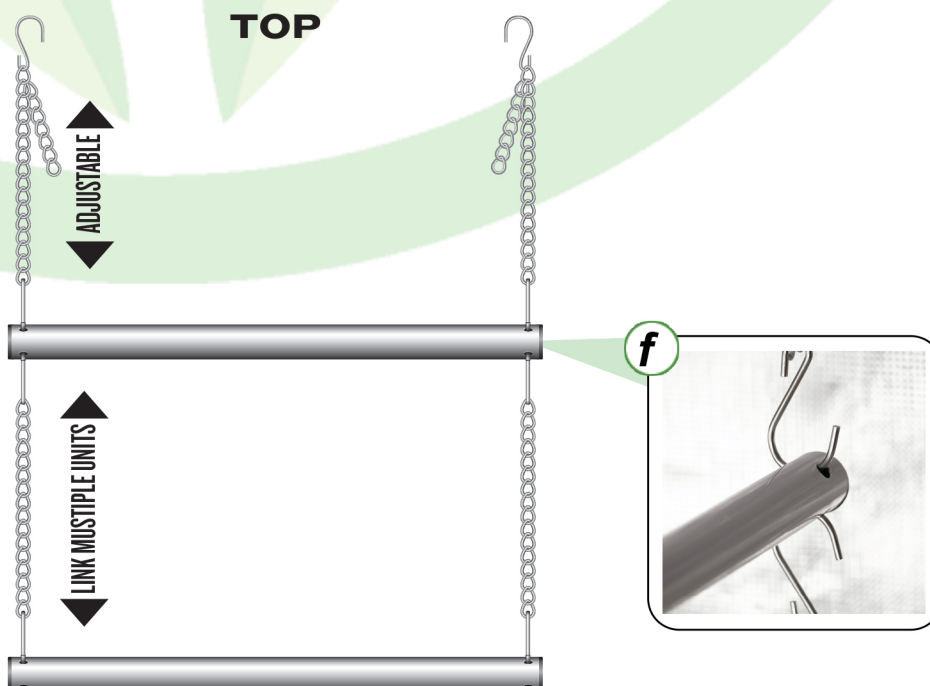
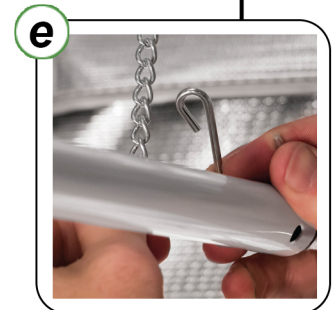
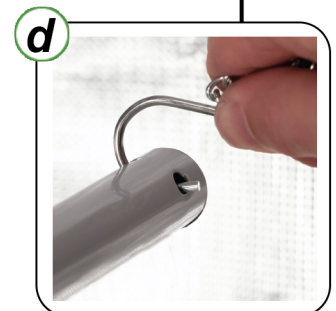
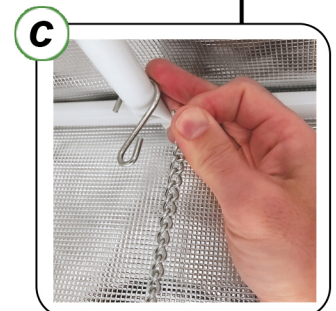
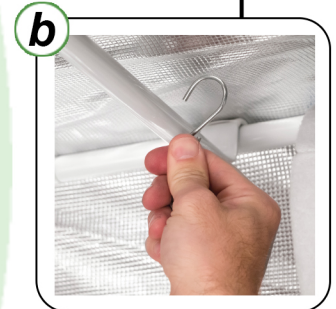
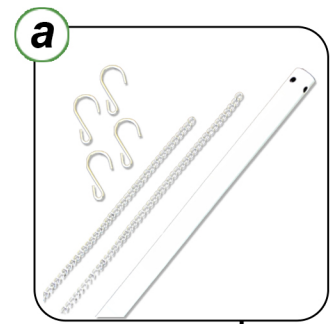
## Setting up the Dryer Tent Kit (cont.)

6. Locate the Hurricane Inline Fan (image a). Attach the open end of the ducting to the FLAT side of the Hurricane Inline Fan using the provided hose clamp (image b). Tighten for a snug fit. The Hurricane Inline Fan will be pulling air from inside the tent, through the Phresh Carbon Filter, ensuring that your exhaust is free of odors and aromas.
7. Place the Hurricane Inline Fan in a convenient area, out of the way or use the mounting bracket to attach it to a nearby wall.
8. Locate the Thermometer/Hydrometer (image c). Remove the battery cover and remove the plastic safety blocker from the battery terminal. You can be creative on where you would like this placed inside the tent, but the easiest placement is inside the tool pouch on the inside of the tent.
9. Run the external probe to the outside of the tent, through the nearest ducting port. Make sure the probe is not touching any surface on the outside of the tent as this will provide false readings.
10. Locate the Clip-On Active Air Fan (image d). Clip the fan to any one of the inside corner vertical poles. Make sure the fan is not directed towards the center of the tent, or directly facing any drying vegetative material. The fan is designed to provide circulation and air movement only.



## Setting up the Hanging Rack

1. Locate and unpack the GGT Drying Rack (image a). You will have multiple rack kits to use for a stacked configuration inside your Dryer Tent Kit.
2. Place two hooks on the top support pole of your tent at both ends of the tent (image b).
3. Locate the included chains. Attach one end of each of the chains to each of the ceiling mounted hooks (image c).
4. Locate the horizontal drying rack bar. Attach one hook to either end of the bar (image d)
5. Attach each bar hook to each of the chains at the desired hanging height (image e)
6. Repeat this process for the remainder of the GGT Drying Rack bars (image f). Please ensure that the bars are hanging securely and level to the ground. The result should appear as shown below.



## Almost done, final assembly...

1. Now that your Dryer Tent Kit is fully assembled, you can take this time to place the wire hangers (image a) on the horizontal bars in preparation for your harvest.



## Plugging In

2. Use the diagram below to plug the powered components into the included 6-Site Power Strip. The Hurricane Inline Fan will connect first to the Speedster Fan Controller. The Speedster Fan Controller then plugs directly into the power strip. This will allow you to control the air flow through the tent. The Clip-On Active Air Fan will plug directly into the power strip.
3. Locate the GFCI Shock Protector. Plug the GFCI into the nearest outlet. Plug the power strip into the GFCI Protector, then turn on the power strip to bring power to your system.

You're all set! For any questions, or further instruction, please reach out to our team of professional grow support technicians for free lifetime grow support included with every SuperCloset system at 1-877-476-9787 or [Info@SuperCloset.com](mailto:Info@SuperCloset.com).

Happy Growing (and Drying)!

